

- Insert the two plugs and tighten the screws. Suspend the Utility Heater in the holder (Fig 3).
- Finally, secure the Utility Heater by means of the lateral screw which fastens the device to the holder (Fig 4).
- It should not be possible to move the device.

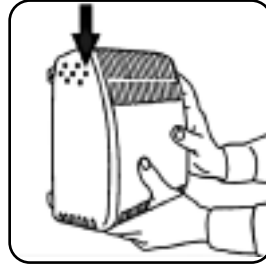


Figure 3

#### CLEANING

The Utility Heater should be cleaned twice a year. Clean it with a vacuum cleaner to remove dust and dirt from the heating element and from the motor.

- First disconnect the mains plug from the socket and let the Utility Heater cool off.
- Clean the housing with a damp cloth or a brush. Do not use water.

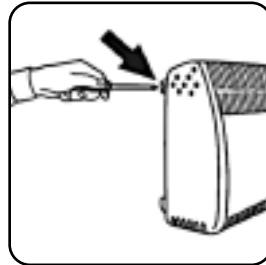


Figure 4

#### STORAGE

- Keep the original box in which the Utility Heater was packed to store it during the warmer months when it is not in use.
- Clean the Utility Heater according to the instructions under CLEANING.
- Pack the Utility Heater in the original box and store it in a cool, dry place.

#### SPECIFICATION

HSUH400: 400W; 230-240V; 50Hz

**HEATSTORE**

Telephone: **0117 923 5375** Fax: **0117 923 5374**  
Island Park Bristow Broadway Bristol Avonmouth BS11 9FB

## HSUH 400 Utility Heater Operating Instructions



### IMPORTANT SAFEGUARDS

**WHEN USING ANY ELECTRICAL APPLIANCE, BASIC SAFETY PRECAUTIONS SHOULD ALWAYS BE FOLLOWED.**

**PLEASE READ ALL INSTRUCTIONS CAREFULLY AND RETAIN FOR FUTURE REFERENCE**

**HEATSTORE**

## IMPORTANT SAFETY INSTRUCTIONS

1. Read and observe all instructions before putting the Utility Heater into service.
2. Only connect the device to a single-phase socket with mains voltage as specified on the rating plate.
3. This device meets the electromagnetic compatibility requirements specified in EN 55104/95 with regard to interference with radio and TV sets.
4. Keep flammable objects at a distance of at least 100cm from the Utility Heater.
5. Do not cover the Utility Heater.
6. The supply lead must not come into contact with the Utility Heater when it is in operation.
7. The front screen gets very hot during prolonged operation.
8. Mount the Utility Heater carefully to avoid accidental contact.
9. Do not install the Utility Heater in rooms subject to fire or explosion hazards.
10. The Utility Heater should not be used close to a bath, shower, wash basin or swimming-pool.
11. The Utility Heater should not be set up or mounted directly below an electric socket.
12. Always pull out the mains plug when the Utility Heater is not in use. Do not pull the lead to pull out the plug.
13. Always check the mains cable for defects before using the Utility Heater. The Utility Heater must not be used if the mains cable is damaged.
14. The mains cable must be replaced at a workshop approved by the manufacturer as special tools are required.
15. Keep the Utility Heater clean, especially when it is not in use for a long period.

## OPERATING INSTRUCTIONS

- The Utility Heater should only be mounted on a wall in a vertical position (thermostat switch on the front right hand side).
- The safety clearances according to Fig. 1 and the statutory safety clearances must be preserved during assembly.

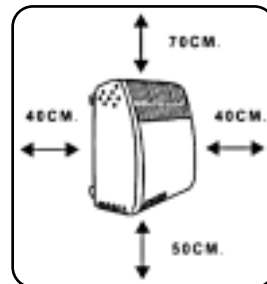


Figure 1

- The device is ready for service when the mains plug is plugged into the socket.

## Thermostat operation

- The thermostat switch automatically switches on/off the Utility Heater.
- The temperature is increased (approx. +5°C up to approx. 30°C) by turning down the adjustable thermostat switch. The correct position of the thermostat is selected by turning the thermostat switch to the bottom position.
- When the room has reached the desired temperature, slowly turn the thermostat switch until a 'click' is heard. The thermostat switches on/off the Utility Heater in this position and thus maintains the set temperature.

## Frost detection position

- If you wish to have the device function solely as a frost guard, turn the thermostat switch up to the highest position.

## Protection against overheating

- An additional fitted safety thermostat protects the Utility Heater against overheating and switches it off automatically. The service lamp then goes out.
- If the device switches itself off, disconnect the mains plug from the socket. The Utility Heater is ready for service again after a short cooling-off phase (approx. 15 minutes). Plug the mains plug back into the socket.
- If this repeats itself, first check whether the thermostat switch is set correctly or if objects hinder the heating operation.

## Service lamp

- The service lamp illuminates during heating operation. The service lamp goes out when the thermostat switches off heating operation temporarily.

## WALL ASSEMBLY

- Pay attention to the necessary safety clearances (Fig.1). Make sure there is a minimum clearance of 70cm if the device is fitted under a shelf.
- The Utility Heater must be fixed to a vertical wall by means of the assembly hoop. To do so, drill two holes at the specified clearances (Fig.2). Use the assembly hoop as a template (Fig.2).

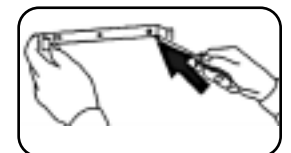


Figure 2